

About Our Project

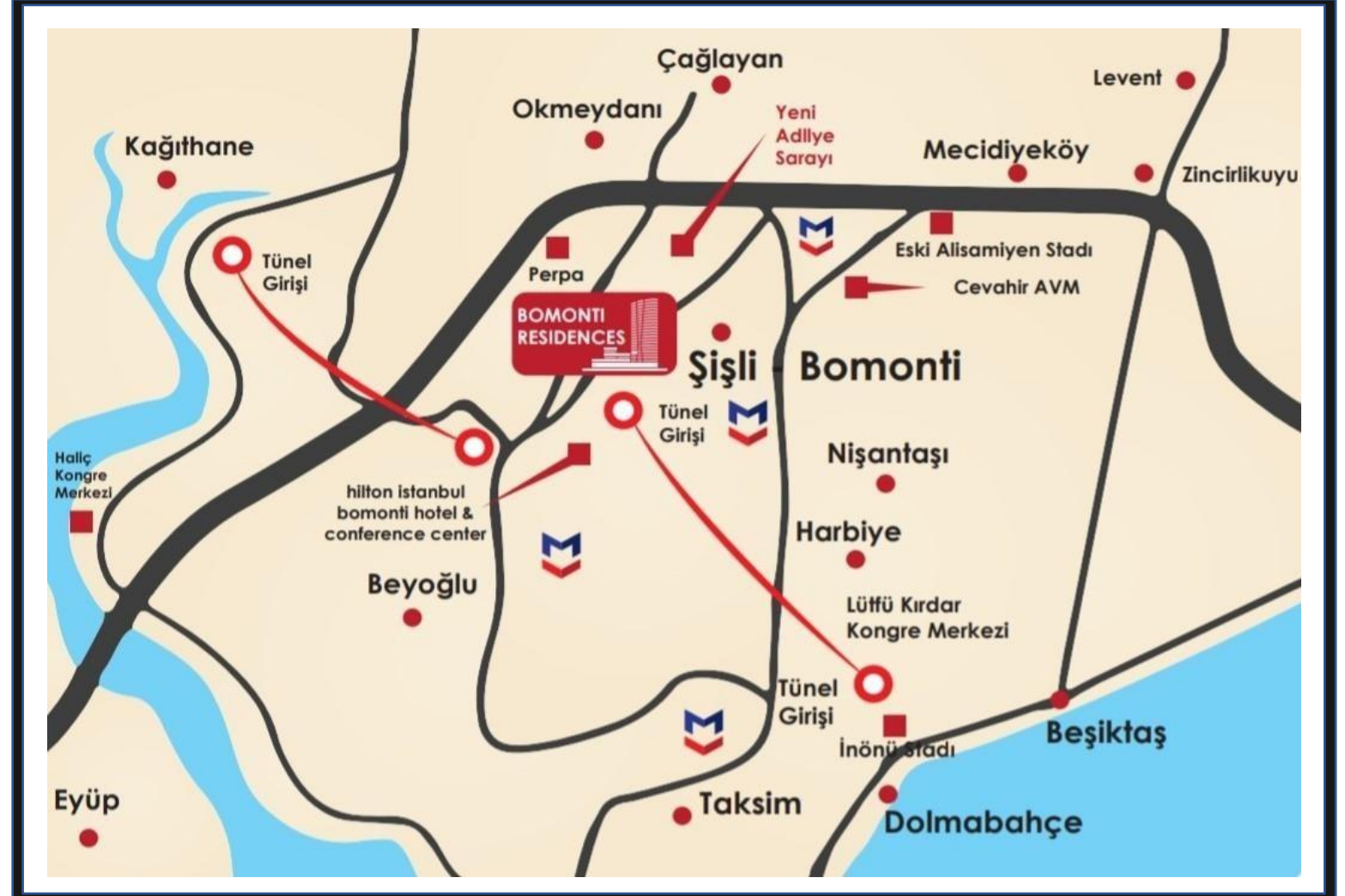
Bomonti Residences by Rotana is located in the heart of Istanbul, Şişli, which is the most valuable part of the city being the center of trade and shopping by centuries.

Being one of the most comprehensive mixed-usage projects of Istanbul, Bomonti Residences by Rotana consists high quality residences, shopping stores as well as a 5 star-hotel.



Our project is located in Bomonti, a part of Şişli municipality and the most promising part of the city that is attracting investors' attention as being easy access to most vital locations such as the Bosphorus, shopping centers, hospitals, international schools, as well as the favorite place to socialize for locals.

- 3 min drive to the Bosphorus
- 5 min walk to Okmeydanı Hospital
- 7 min walk to metro station
- 10 min walk to Taksim Square
- 10 min walk to Nişantaşı
- 15 min drive to Asian side
- 35 min drive to Istanbul Airport



UNIT TYPES- 1+1, 2+1, 3+1, 3,5+1,4,5+1

AREA RANGE - 63 - 241 m²

TOTAL AREA -170,000 m²

LAND AREA -18,000 m²

DELIVERY DATE -JUNE 2021

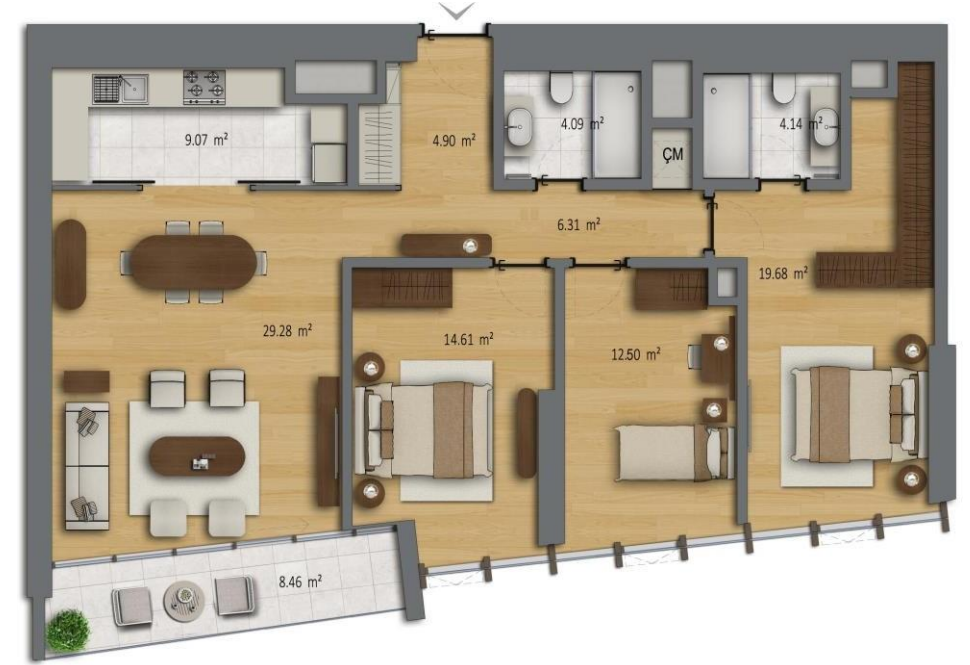


Types of Apartments:

1+1



Types of Apartments:
2+1



Types of Apartments:
3+1

Types of Apartments: 3,5+1



Types of Apartments: 4,5+1

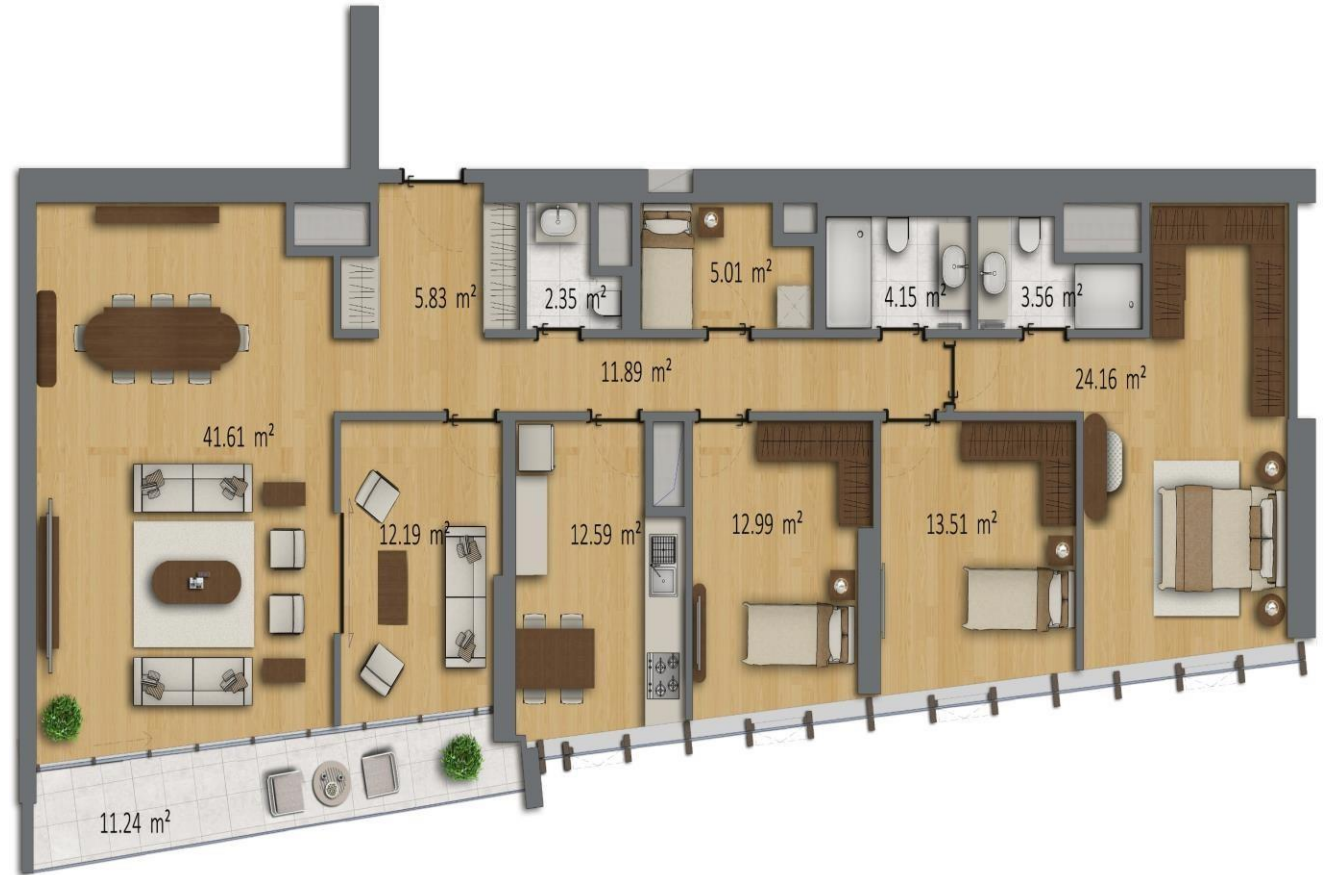
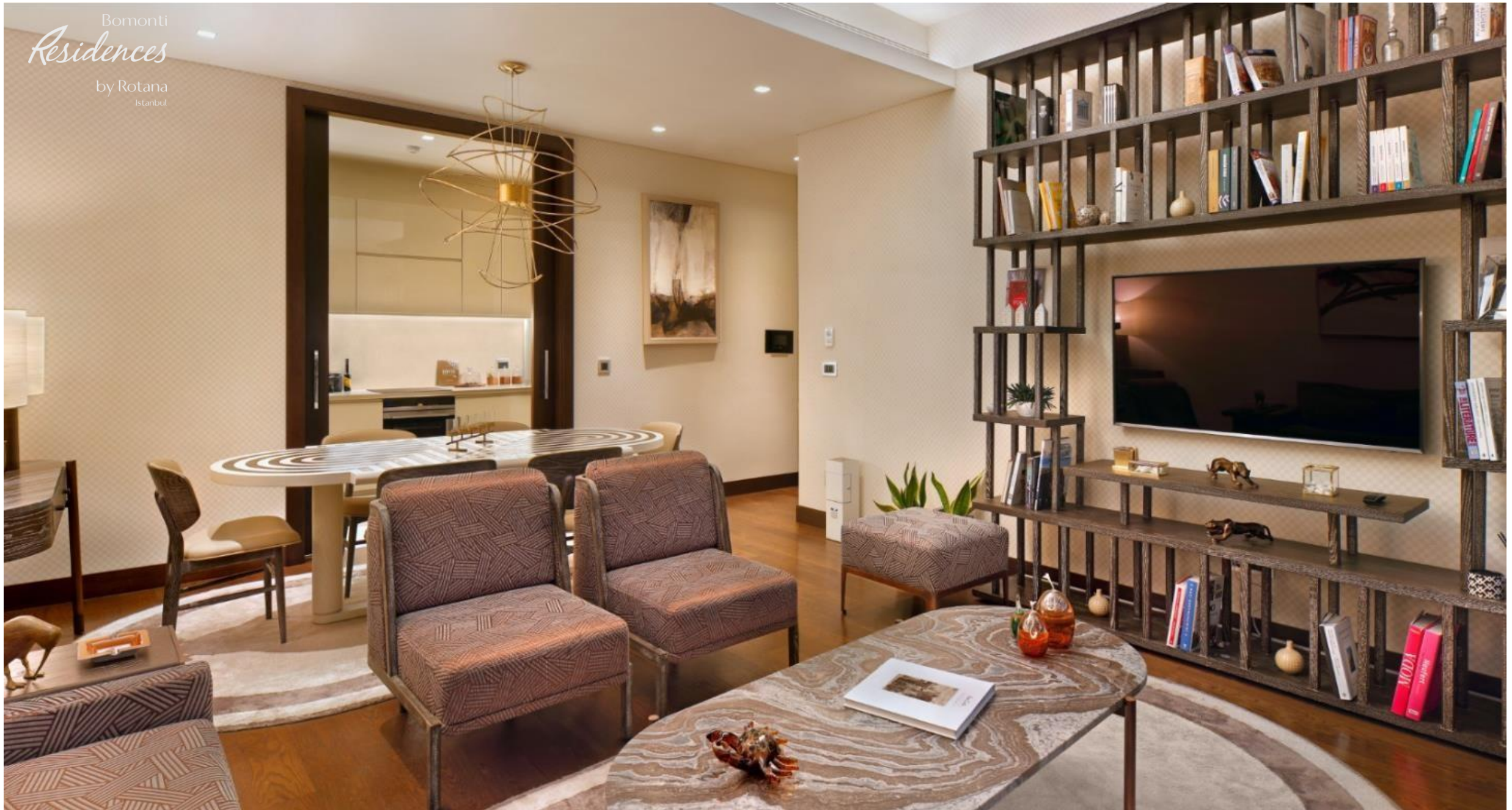


PHOTO GALLERY

Bomonti
Residences
by Rotana
Istanbul













Bomonti
Residences
by Rotana
Istanbul



Bomonti
Residences
by Rotana
Istanbul

